

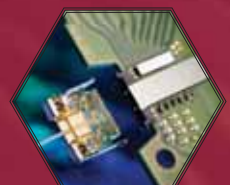
www.sreichcompany.com



Industrial chemical pump

REICH

PROFESSIONAL CHEMICAL PUMP TECHNOLOGY



topflo®
EMEC

JOHSTADT
Pumpen | Feuerlöschtechnik

EMEC's products cover a wide array of chemical product treatment requirements.



• **Industrial water treatment**



• **Drinking water processing**



• **Industrial water effluent processing**



• **Chemical and mechanical water purification**

• **Bacterial water purification**

• **Chemicals processing**

• **Industrial food processing**



• **Evaporation towers**



• **Refineries**



• **Health spas**



• **Swimming Pools**

• **Farm, Golf, Garden**

• **Liquid fertilisation and irrigation**

• **Sanitation**



Solenoid driven diaphragm metering pump

☐ Manual stroke length adjustment

☐ High strength PTFE diaphragm

☐ Horizontal mounting

☐ PVDF pump head

○ **AMS Series** Flow rate up to 60 L/hr, working pressure up to 25 bar



AMS MF digital multi-function

AMS PH built-in pH reading and adjustment

AMS RH built-in ORP reading and adjustment



AMS PLUS

constant / constant 1-10

multiplier 1-10

divider 1-10 / 1-100 / 1-1000

mA current signal

AMS CO PLUS constant with divider 1/10

AMS CL PLUS constant with level control and divider 1/10

○ **KMS Series** Flow rate up to 18 L/hr, working pressure up to 20 bar



KMS DC digital constant

KMS MF digital multi-function

KMS PH built-in pH reading and control

KMS RH built-in ORP reading and control

KMS EN weekly timer and solenoid valve control

KMS CL built-in chlorine reading and control



K PLUS

constant / constant 1-10

multiplier 1-10

divider 1-10 / 1-100 / 1-1000

mA current signal

KCO PLUS constant with divider 1/10

KCL PLUS constant with level control and divider 1/10

PUMP HEADS

PVDF

PP

AISI316

PMMA

LPV



SUPPLIED ACCESSORIES

Level Switch with foot filter 1/2" or 3/4" Injection valve



Solenoid driven diaphragm metering pump

○ VMS Series Flow rate up to 10 L/hr, working pressure up to 15 bar

- Electronic flow adjustment
- Wall mounting
- Also available ultra-quiet models
- High strength PTFE diaphragm
- PVDF pump head



VMS MF digital multi-function

VMS PO built-in pH, ORP reading and control

VMS EN weekly timer and optional solenoid valve control



VCO

constant

VCL

constant with level control

○ WDPHxx / WTC Series Flow rate up to 10 L/hr, working pressure up to 15 bar

- Digital programmable controller with 2 pumps
- Wall mounting
- Multiple parameters measurement and control
- Dosing and controlling systems for dry feeder and salt chlorine generator
- Dosing
 - ◆ pH & Chlorine
 - ◆ pH & Redox (ORP)
 - ◆ High strength PTFE diaphragm
 - ◆ Double PVDF pump heads
 - ◆ pH and active oxygen measurement and control
 - ◆ Conductive / Timer / Conductive Bleed / Electrovalve



WDPHRH acid (pH) and disinfectant (ORP)

WDPHCL acid (pH) and chlorine

WDPHCF acid, flocculant (gr/h) and 230 VAC output for chlorine

WDPHCA acid, anti-algae and 230 VAC output for chlorine

WDPHOS acid (pH) and active oxygen



WTC

inhibitor proportional feed,
biocide weekly timer, conductivity bleed

Compressed air driven metering pump

○ RAC Series Flow rate up to 12 L/hr, working pressure up to 6 bar

- Compressed Air driven pumps
- 3 installing modes: horizontal, wall and DIN mounting
- Multiple pumps installation (side by side)
- Single injection control knob



RAC



RACV



RACP

PUMP HEADS

PVDF

PP



SUPPLIED ACCESSORIES

Level Switch
with foot filter



1/2" or 3/4"
Injection valve



WTC
Ecdcc probe



Motor driven diaphragm metering pump

- High strength PTFE diaphragm
- Pump head : PVDF/PVC/PP/Stainless Steel
- Spring return mechanism
- Motor 1 phase or 3 phase
- **PRIUS Series** Flow rate up to 530 L/hr, working pressure up to 10 bar



PUMP HEADS



PVDF



AISI316



PP

Measurement and Controller

- Water treatment
- Industrial-level chemical dosing
- Depuration
- Cooling towers
- Swimming pools disinfection
- Agriculture

Parameter configuration.

- ◆ pH
- ◆ ORP
- ◆ Chlorine (total, free and combined)
- ◆ Bromine
- ◆ Conductivity (contact or inductive)
- ◆ Inductive conductivity
- ◆ Chlorine dioxide
- ◆ Hydrogen peroxide
- ◆ Ozone
- ◆ Peracetic acid
- ◆ Turbidity
- ◆ Dissolved oxygen
- ◆ Temperature
- ◆ Chlorine dioxide



LD Series



MTOWER Series



JC Series

Chlorine dioxide generator

- **LOTUS Series** produces, doses and controls

Chlorine Dioxide for water disinfection.

Chlorine Dioxide is produced from diluted base chemicals: acid-chlorite process by Hydrochloric Acid (HCl 9%) and Sodium Chlorite (NaClO₂ 7.5%).

Functions

- ◆ In-situ ClO₂ production
- ◆ ClO₂ dosing in proportional mode to water meter
- ◆ ClO₂ dosing in proportional mode to ClO₂ reading (probe and probe holder not included)
- ◆ Flow control input (flow alarm)
- ◆ Tank level controls (level alarms)
- ◆ Water meter input
- ◆ Stand-by input
- ◆ Real time production data
- ◆ Pumps and SEFL flow sensors monitoring
- ◆ Permanent data storage with system data log (on Logbook menu)
- ◆ Service due date



- Circulating water flow
- Cosmetics industry
- Drinking water
- Food & Beverage industry
- Horticulture / Agriculture
- Pharmaceutical industry
- Semi-conductor industry
- Waste water

TAPFLO pumps for transfer a very wide range liquid and chemical with a few components enabling easy maintenance.

- | | |
|--|---|
| <input type="checkbox"/> Corrosive and chemical aggressive | <input type="checkbox"/> High and low viscous |
| <input type="checkbox"/> Abrasive | <input type="checkbox"/> Solid laden |
| <input type="checkbox"/> Shear sensitive | <input type="checkbox"/> Flammable |

Applications: Chemical Industry, Hygienic Applications, Mechanical Industry, Paint, Print and Varnish Industry, Pulp and Paper Industry, Surface Conditioning, Water Treatment, etc.

Benefits with Tapflo pumps....

- Run dry without damage
- Infinitely variable flow control
- Few components
- Self priming up to 8 m. from dry suction pipe
- Solid, strong and long life design
- Lubrication free air distribution system
- No electricity needed
- Air operated can run against a closed pipe or closed valve without damage



Key components of the Tapflo pump



Pollution free air valve

The air valve is the driving heart of the pump, distributing the compressed air to the chambers behind the diaphragms. It is made for maintenance free duty with no lube air, thanks to the ingenious sealing system. It will not only save your money for lubrication, it will also save your environment from pollution.

The Tapflo air valve has no deadlock position – the pump will always start automatically when air is supplied to the pump.

The valve body is made from brass or optional PET or stainless steel AISI 316L.



Long life diaphragms

Tapflo diaphragms are of composite construction, superior for continuous heavy duty service, with a completely smooth surface in contact with the liquid. This results in no leak through and a diaphragm which is easy to keep clean. The diaphragm is available in various materials and colours to suit any requirements, it is made from PTFE TFM, PTFE TFM 1705B, EPDM, NBR or FKM, Food grade are also available.



Ball check valves

The Tapflo pump is fitted with four check valves, making sure that the liquid is transferred in the right direction through the pump. The valve is of ball valve type, the most simple and reliable valve design. It has a good sealing capability and is easy to keep clean and to replace if necessary. The valve ball is available in EPDM, NBR (nitrile), PTFE, AISI 316L, polyurethane and ceramic to suit any kind of liquid.

The Tapflo pump is usually an essential part in the process with hazardous fluids. We always strive to supply the safest and most environmental friendly solution for these fluids. The Tapflo diaphragm pump is driven by compressed air. The two diaphragms, connected by a diaphragm shaft, are pushed back and forth by alternately pressurising the air chambers behind the diaphragms using an automatically cycling air valve system.

Pressure : 8 bar
Viscosity : Max to 20,000 cPs



Many TAPFLO pumps comply with the EC ATEX directive for equipment in explosion hazardous environments. ATEX (directive 94/9/EC) classification of explosion proof versions Ex-zone 1 available (ATEX group II, cat 2)

○ Plastic Series : PE / PTFE pumps

TR9	Max flow rate 11 l/min	Inlet / Outlet 1/4"
TR20	Max flow rate 24 l/min	Inlet / Outlet 3/8"
T50	Max flow rate 60 l/min	Inlet / Outlet 1/2"
T100	Max flow rate 125 l/min	Inlet / Outlet 1"
T200	Max flow rate 330 l/min	Inlet / Outlet 1-1/2"
T400	Max flow rate 570 l/min	Inlet / Outlet 2"
T800	Max flow rate 820 l/min	Inlet / Outlet 3"



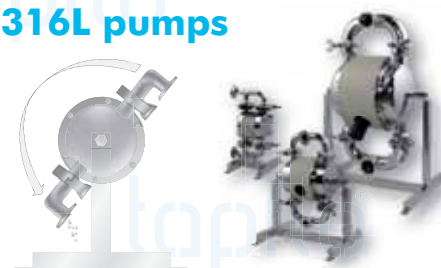
○ Metal Series : Aluminium / PTFE coated aluminium / Cast iron / Stainless Steel AISI 316L pumps

TX25	Max flow rate 26 l/min	Inlet / Outlet 1/2"
TX70	Max flow rate 78 l/min	Inlet / Outlet 3/4"
TX120	Max flow rate 158 l/min	Inlet / Outlet 1"
TX220	Max flow rate 330 l/min	Inlet / Outlet 1-1/2"
TX420	Max flow rate 570 l/min	Inlet / Outlet 2"
TX820	Max flow rate 820 l/min	Inlet / Outlet 3"



○ Sanitary / Hygienic Series : Stainless Steel AISI 316L pumps

T30	Max flow rate 28 l/min	Inlet / Outlet 1"
T80	Max flow rate 78 l/min	Inlet / Outlet 1"
T125	Max flow rate 155 l/min	Inlet / Outlet 1-1/2"
T225	Max flow rate 330 l/min	Inlet / Outlet 2"
T425	Max flow rate 570 l/min	Inlet / Outlet 2-1/2"



○ Aseptic EHEDG / Hygienic Series : Biotech / Pharmaceutical / Foods

TX94	Max flow rate 94 l/min	Inlet / Outlet DN40
TX144	Max flow rate 144 l/min	Inlet / Outlet DN50
TX244	Max flow rate 330 l/min	Inlet / Outlet DN65



○ Pharmaceutical Series : UPS VI approved

Sanitary design with smooth internal surfaces. Inert materials are no contamination of the pumped product. Extremely easy to maintain with very few components.

TU53 PTT-5UVI	Max flow rate	50 l/min
TU103 PTT-5UVI	Max flow rate	100 l/min
TU203 PTT-5UVI	Max flow rate	200 l/min
TU403 PTT-5UVI	Max flow rate	400 l/min



○ Powder Series : PTFE coated aluminium pumps

Transferred in a hermetic system from the powder container to your process.

TXP120	Max weight approximate	2.5 kg/min	Inlet / Outlet	1"
TXP220	Max weight approximate	5 kg/min	Inlet / Outlet	1-1/2"
TXP420	Max weight approximate	10 kg/min	Inlet / Outlet	2"
TXP820	Max weight approximate	15 kg/min	Inlet / Outlet	3"



○ Drum / Barrel Series : TD diaphragm drum pumps

Handheld pump for dispensing chemicals, degreasing and cleaning agents from drums.

The PE & PTFE drum pumps

TDR20	Max flow rate	20 l/min, 3/8"
TD50	Max flow rate	50 l/min, 1/2"
TD100	Max flow rate	100 l/min, 1"



The metal drum pumps

TXD25	Max flow rate	25 l/min, 1/2"
TXD70	Max flow rate	70 l/min, 3/4"
TXD120	Max flow rate	120 l/min, 1"



○ Filterpress : TF filterpress pump stations

The Tapflo pump station for filterpress feeding is a very compact unit that can be mounted directly to the filterpress and function allows the user a straight forward pressing of slurries. Pressure regulator is already mounted to the unit. An external pressure booster doubles the delivery pressure.

TF50	Max flow rate	50 l/min,	Max pressure	14 bar
TF100	Max flow rate	100 l/min,	Max pressure	14 bar
TF200	Max flow rate	200 l/min,	Max pressure	12 bar
TF400	Max flow rate	400 l/min,	Max pressure	12 bar



■ Active pulsation dampeners : DT Series

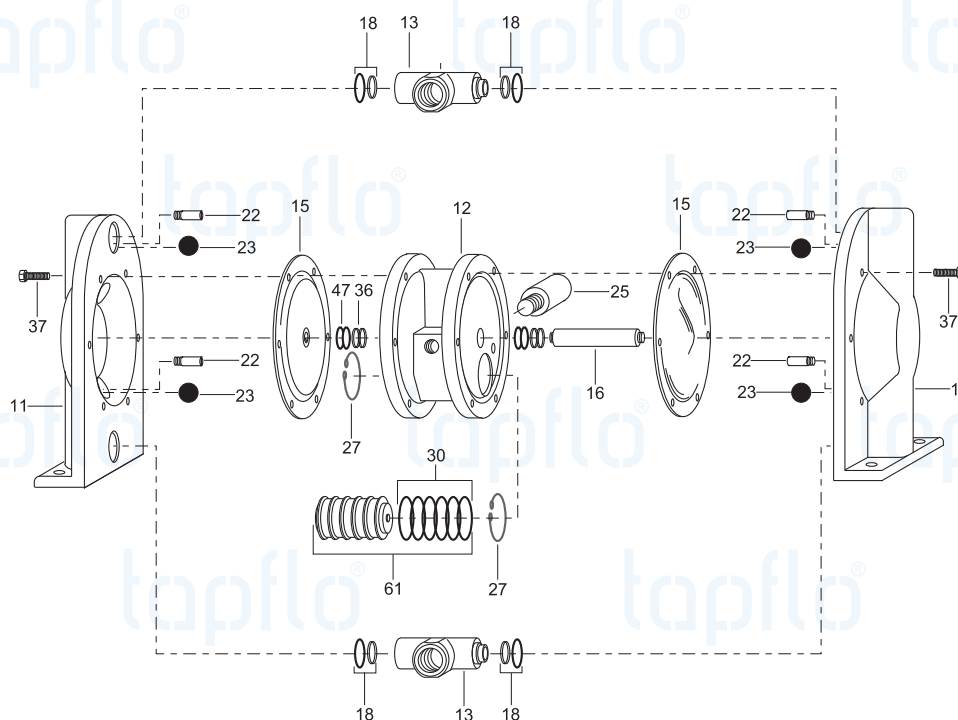
Actively with compressed air and a diaphragm, automatically setting the correct pressure to minimize the pulsations.

The way to remove pressure variations on the discharge of the pump.



PE / PTFE	Metal	Sanitary	Size
DTR9	-	-	3/8"
DTR20	DT25	DT30	3/8"
-	DT70	DT80	3/4"
DT50	-	-	1/2"
DT100	DT120	DT125	1"
DT200	DT220	DT225	1-1/2"
DT400	DT420	DT425	2"
-	DT820	-	3-1/2"

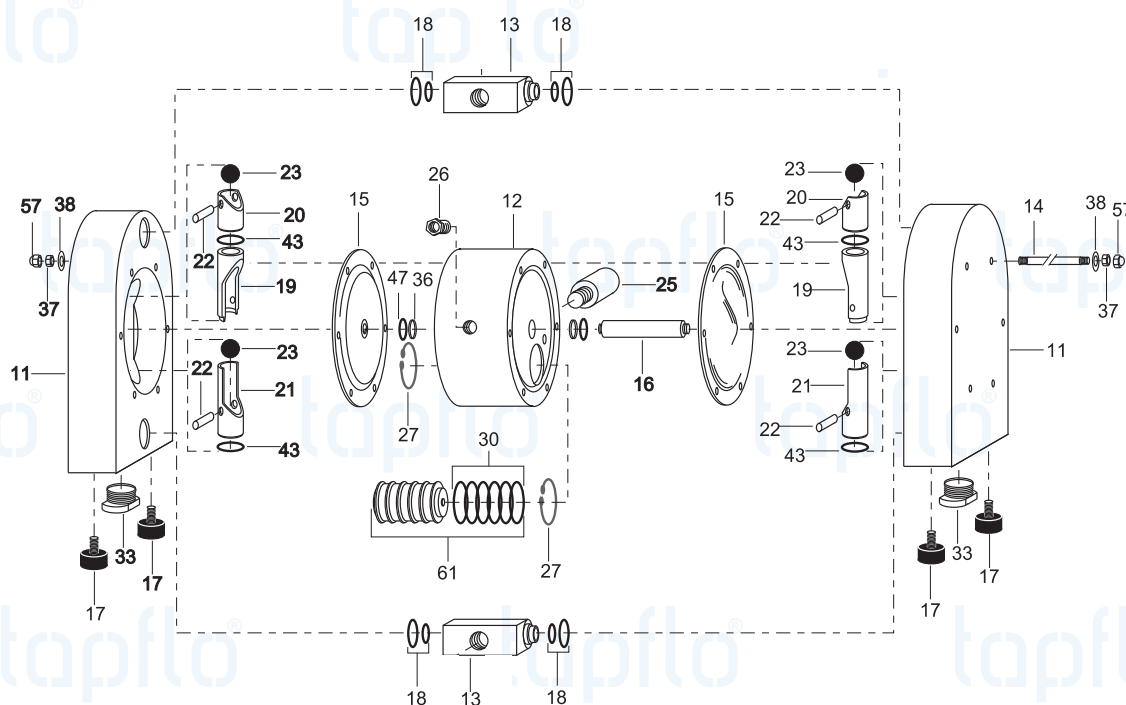
○ Spare parts : Metal pump



Spare parts for metal pump

Pos	Description	Qty/pump
11	Housing	2
12	Center block	1
13	In/outlet	2
15	Diaphragm	2
16	Diaphragm shaft	1
18	O-ring/gasket (in/outlet)	4
22	Valve ball stop	4
23	Valve ball	4
25	Muffler	1
27	Circlip	2
30	O-ring	6
36	Center block sealing	4
37	Screw	12
47	O-ring (back up for 36)	4
61	Air valve complete	1

○ Spare parts : Plastic pump



Spare parts for plastic pump

Pos	Description	Qty/pump	Pos	Description	Qty/pump
11	Housing	2	25	Muffler	1
12	Center block	1	27	Circlip	2
13	In/outlet	2	30	O-ring	6
15	Diaphragm	2	36	Center block sealing	4
16	Diaphragm shaft	1	37	Screw	12
18	O-ring/gasket (in/outlet)	4	47	O-ring (back up for 36)	4
22	Valve ball stop	4	61	Air valve complete	1
23	Valve ball	4			

The CT Pumps are open or semi-open single stage centrifugal pumps. They are manufactured in high finish and strong material ; stainless steel AISI 316L. The pump range meets the demands from a variety of today's industry. Suitable for Beverage industry, Chemical manufacture, Food industry, Mechanic industry, and Pharmaceutical industry application.

○ CTI Series : Centrifugal Industrial pumps

CTI is designed with glass blasted pump casing. A variety of connection types, mechanical seal options and other executions are available to satisfy most type of industrial duties.

Capacity : 7 - 60 m³/h

Head : 10 - 47 m.



○ CTH Series : Centrifugal Hygienic pumps

Supplied with electro-polished pump casing and internals. This series is specially dedicated for hygienic duties in food, beverage and pharmaceutical industries, where clean- and drain-ability are important keys.

Capacity : 7 - 60 m³/h

Head : 10 - 47 m.



○ CTS Series : Self-priming Centrifugal pumps

Capable of creating up to 4.5 m. of suction lift with mechanical strength

- CTS H with electro-polished surfaces for sanitary applications.
- CTS I with AISI 316L chemical resistance for industrial applications.



○ CTM Series : Centrifugal magnetic drive pumps

Sealless pumps ideal for hazardous fluids, commonly used transfer, filtering and circulation application.

- No leakage of dangerous fluids or vapors provide a safe working environment
- Compact and efficient pumps
- Reliable but inexpensive

Flow rate : max 10 m³/h

Head : max 13 m.

Material : PP - PVDF



○ CTV Series : Centrifugal verticle pumps

Sealless and quiet electric pump for coating and chemical industries

- No mechanical seal - leakage free and maintenance friendly
- Insensitive to solids

Flow rate : max 34 m³/h

Head : max 31 m.

Material : PP - PVDF - Stainless Steel



PT pump design solutions in order to maximize running time, minimize maintenance.

- No mechanical seal or stuffing box
- Suitable for aggressive or viscous fluids
- Dosing of very corrosive chemicals
- Robust, entirely of ductile iron
- Heavy-duty bearings, greased for life
- Low sound level : < 70 dB at 1 meter
- Damage-free continuous dry running
- Close coupled with gearbox protection
- Reversible flow
- Plug and Play
- Self-priming

○ PT Series : Peristaltic pumps

Capacity : Range up to 150 m³/h

Pressure : Up to 15 bar

○ PTL Series : Peristaltic pumps - Low pressure

PTL pump suitable for pumping and dosing low or high viscous, pasty, pure, neutral, aggressive or abrasive liquids, those containing gases or which tend to froth or those containing solids in the many industries.

Capacity : Range up to 10 m³/h

Pressure : Up to 4 bar

Hose materials: Neoprene, Norprene, Silicone, Pharmed, Hypalon, EPDM / Natural / Nitrile Rubber



JHSTADT Progressive cavity pump / Screw pump

• Pumping of media

- with highest viscosity
- with content of fibre material
- which are inhomogeneous and abrasive
- with solid content (TS-content)
- type liquid-gas mixtures (foam)
- which are not liquidable

- Temperature range -40 °C ... +200 °C
- Continuous, **speed controllable** delivery rate
- High **accuracy** in delivery and dosing
- Small **pulsation** - and turbulence delivery flow
- **No structure destruction** of delivery media (no bruise forces)
- High possibility of **self suction**, up to 9 m vacuum
- Reverseable delivery flow

Capacity : 2.5 - 350 m³/h

Pressure : up to 24 Bar

Shaft sealing : Mechanical seal, Stuffing box

Model : Closed coupled with engine (AF xxx B)
 : Bearing bracket with engine (AF xxx S)
 : Closed coupled, shaft (F xxx B)
 : Bearing bracket, shaft (F xxx S)

Drive : Gear motor, Variable speed gear motor,
 Combustion engine, Pneumatic motor,
 Hydraulic motor

Fixing : Base plate, Moveable, Mobile



Application S REICH serves



Our teams are experienced in choosing the right pumps for different applications for various industries.

Drinking water treatment
Food and Hygienic
Hotel & Spa
Machinery & Mechanical
Brew & Beverage
Pharmaceutical & biotech
Hospital & Clinic
Pools

Chemical processing
Ink, Paint & Print
Surface treatment
Semiconductor
Pulp & Paper
Liquid fertilisation and irrigation
Cooling towers
Waste water treatment





*We offer the right solution for you and quickly respond to your needs by our product ranges and expertise.
We make you have **more choices, reliability, and precision.***

ตัวแทนจำหน่ายอย่างเป็นทางการ **OFFICIAL DISTRIBUTOR OF**



Products **WE SERVE**

- Air Operated Double Diaphragm Pump
- Centrifugal Pump / Vertical pump / Magnetic driven
- Drum Pump / Barrel Pump
- Food / Hygienic / Sanitary Pump
- Peristaltic Pump / Hose Pump
- Metering Pump / Dosing Pump
- Screw Pump / Progressive Cavity Pump
- Chlorine Dioxide Generator / Water Disinfection
- Controller / Measurement / Probe Sensor

บริษัท เอส ไรคส์ จำกัด

14/9 ซอยไผ่สิงห์โต ถนนพระราม 4 แขวงคลองเตย เขตคลองเตย จังหวัดกรุงเทพฯ 10110

14/9 Soi Paisingtoo, Rama 4 Road, Kwang Klongtoey, Khet Klongtoey, Bangkok 10110, THAILAND

Phone: +66-2261-8818 Fax: +66-2261-8819

Email: info@sreichcompany.com



LINE ID: sreich

www.sreichcompany.com